

“Castle Gardens”

Designed by Sarah Fielke
Featuring the “Enchanted” collection by Sarah Fielke
Sewn and quilted by Amy Lobsiger
Finished Size: 68 x 84”



Check www.windhamfabrics.com Free Project section to see if there are any pattern updates before you start your quilt

WINDHAM FABRICS

812 Jersey Ave ~ Jersey City, NJ 07310 ~ 201.659.0444 ~ FAX: 201.659.9719
www.windhamfabrics.com email: retail@windhamfabrics.com

“Castle Gardens”

Page 2



39546-X



39547-3



39547-5



39547-6



39548-1



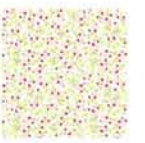
39548-3



39549-4



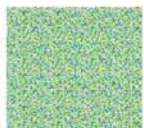
39549-6



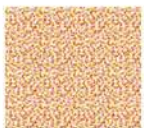
39550-3



39551-3



39551-4



39551-6



35362H-1



35362H-3



35362H-4



35362H-2

Fabric Requirements:

39546-X Multi 2 yards (includes border)

39547-5 Lilac 1/2 yard

39548-1 Periwinkle 3/8 yard

39549-4 Lime 2/3 yard

39550-3 Pink 1 1/4 yards

39551-4 Lime 1/2 yard

35362H-1 Periwinkle 1 1/8 yards

35362H-4 Lime 1 yard

35362H-2 Fuschia 1 2/3 yards (includes border and binding)

5 1/2 yards for backing (39546-X Multi)

39547-3 Pink 1 yard

39547-6 Yellow 5/8 yard

39548-3 Pink 3/8 yard

39549-6 Yellow 5/8 yard

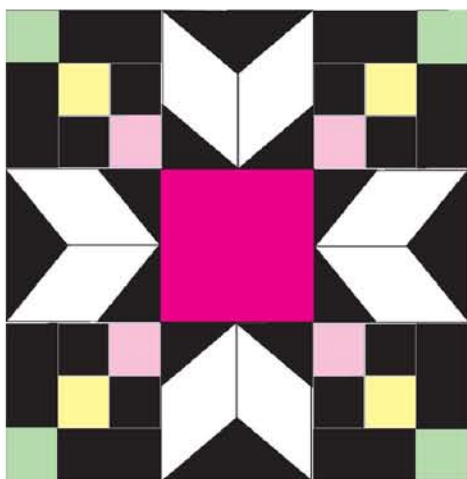
39551-3 Pink 1/2 yard

39551-6 Yellow 1/2 yard

35362H-3 Pink 1 1/4 yards

Instructions

Castle Gardens is made up of 20 star blocks. Each block requires a background color, diamonds, center square and three different accent squares (fabric 1, fabric 2 and fabric 3). See image below for block detail. See cover for all the different block layouts.



Background: 1/4 yard per block



Diamonds: 3" x 42" per block



Fabric 1: 3" x 12" per block



Fabric 2: 3" x 12" per block



Fabric 3: 3" x 12" per block



Center: 5" x 5" per block



“Castle Gardens”

Page 3

Cutting Instructions:

From the background fabric, cut: 2 – 2 1/2" strips and one 2 7/8" strip

From these strips, cut: 12 – 2 1/2" squares, 8 – 4 1/2" x 2 1/2" rectangles, 8 – 2 7/8" squares. Cross cut these squares into 16 half-square triangles along one diagonal.

From accent square fabrics (fabric 1, fabric 2 and fabric 3), cut: 4 – 2 1/2" squares from each fabric

From the diamond fabric, cut 2 – 2 1/2" strips. Cross cut this strip into eight diamond shapes with 4 3/4" long sides using the 45 degree angle on your patchwork ruler. Four diamonds must face one way and four the other way, so make sure you cut them in pairs, with the strip still folded with the selvages together, as it came off the bolt

From the fabric for the center square, cut: 1 – 4 1/2" square

From the border fabric, cut: 9 – 2 1/2" strips – cut each strip in half at the fold yielding 18 – 2 1/2" strips

From the border triangle fabric, cut: 1 – 2 1/2" strip. Sub-cut into 4 – 2 1/2" squares
cut: 2 – 2 7/8" strips. Sub-cut into 18 – 2 7/8" squares.
Cross cut these squares into 36 half-square triangles along one diagonal.

From the binding fabric, cut: 8 – 2 1/2" strips

Sewing:

1. First sew a half square background triangle to either end of the diamonds, see Diagram 1. This will form a rectangle unit. Make eight. Remember to trim the “ears” off the triangles for a neat finish.

Diagram 1



“Castle Gardens”

Page 4

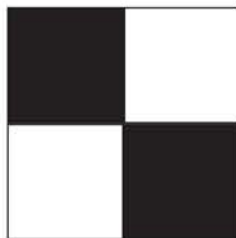
2. Sew the eight units into pairs, matching up the opposite facing diamonds to form a V as shown in Diagram 2.

Diagram 2



3. Next, decide where you want the accent squares to fall, working from the center. Sew a 2 1/2" background square to each of the squares closest to the center, and the middle square. Sew two units together to form a four patch as shown in Diagram 3.

Diagram 3



4. Sew the remaining accent squares for the outer placement to one end of a background rectangle, see Diagram 4.

Diagram 4

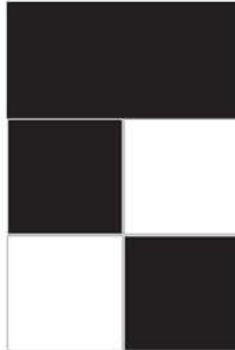


“Castle Gardens”

Page 5

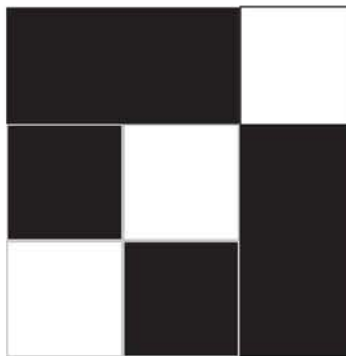
5. Sew a background rectangle to one side of the four-patch unit, see Diagram 5. Check against the picture of the quilt to make sure that the squares are facing in the right direction first!

Diagram 5



6. Sew the background rectangle-accent square unit to the side of the four-patch unit, see Diagram 6, again checking for positioning, and press. Make four units.

Diagram 6



7. Sew a four-patch unit, to a diamond unit, and then another four-patch unit as shown in Diagram 7. Take care of positioning and to match the points. Make two of these rows.

Diagram 7



“Castle Gardens”

Page 6

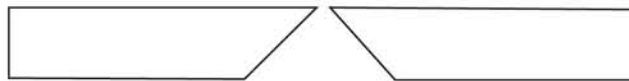
8. Sew the short end of the remaining two diamond units to the center square as shown in Diagram 8.

Diagram 8



9. Sew the block together in rows to form a finished block, referring to the photograph of the quilt. **Border** You should have 18 strips of border. Fold each strip in half along the length, right sides together, and cut a 45 degree angle cut into the end with the fold. When you open the strips up you should have two separate pieces with facing 45 degree angles, see Diagram 9.

Diagram 9



Sew a solid fuschia half square triangle to all of the cuts you just made, a total of 36 pieces in all. Take a pair of facing triangle strips and sew them together up the seam of the fuschia triangles, see Diagram 10. Make 18 and press.

Diagram 10



Measure a block through the center to get the true measurement. It should measure 16". Cut your border strips to the measurement of your block plus 1/2" for seam allowance, taking care that the seam is in the center of the strip.

Sew border strips together end to end with two sets of four for top and bottom borders and two sets of five for side borders.

“Castle Gardens”

Page 7

Match block center seams, triangle seams and block seams, easing as you go if needed. Sew a border strip to the top and bottom of the quilt in this manner. Sew a fuschia square to either end of the remaining two border strips and attach them in the same manner to the quilt top and press.

Your quilt top is complete.

Finishing: Square up your quilt top if required. Layer the quilt – backing, batting and top. Your backing and batting should be a few inches larger than the top all around.

Baste.

Piece your binding strips together at a 45 degree angle. Fold the binding strip in half lengthwise and press. Sew the raw edges to the front of the quilt, trim the backing and batting even with the top and slip stitch the folded edge to the back of the quilt.

**PLEASE READ INSTRUCTIONS THOROUGHLY and
MAKE YOUR SAMPLE BEFORE CUTTING ALL KITS.**

**Always look on our website before starting your project to see
if there are any updates or corrections**

**Be sure to visit www.windhamfabrics.com to see the complete collection
and to download other Free Projects**

WINDHAM FABRICS